

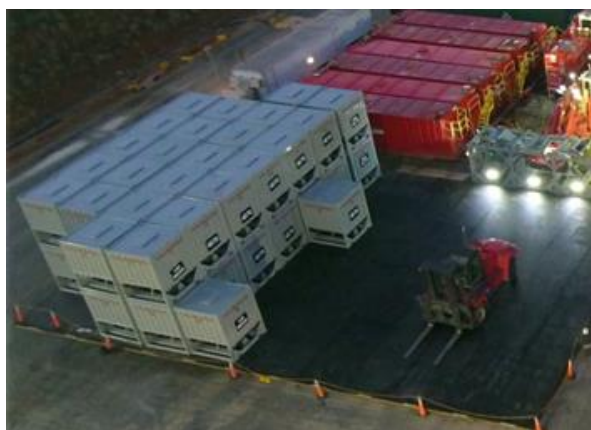
## SRC Energy Collaborates with Halliburton to Champion Major Improvements in Their DJ Basin Asset Stimulation Program

As urban expansion continues throughout the DJ Basin, social responsibility is at the forefront of operators concerns. Operators continue to look for ways to minimize the impact of their drilling and completion operations. Some of the areas of concern during completions are reduced noise, emissions, truck traffic, and time on location. With a large portion of their acreage around Greeley, CO, SRC Energy is constantly looking for ways to improve their operations. As their CEO Lynn Peterson says, “Our challenges are not just economic. We are faced with a social and political environment that requires us to constantly seek out technology and solutions that can accomplish all of our goals.” With this in mind, SRC Energy solicited Halliburton Energy Services to collaborate on an effort to achieve their social, political, economic and environmental goals. By understanding what technology was available and how it best could be deployed, SRC Energy and Halliburton moved forward with field testing and



**Figure 1: Halliburton's noise/emissions reducing Echo fleet**

implementing several changes to their completion operation. After successful initial discovery and planning sessions, the Echo fleet was deployed on Evans pad location in order to address two major challenges. Frac fleet emissions and noise control of the equipment. Extensive testing showed substantial reduction in Decibel levels and the Tier 4 fleet has the lowest emissions in the industry. Although the deployment and integration of the Echo units was an important part; it became only an element of a larger major effort. In addition to reducing noise and emissions from the frac fleet, SRC Energy and Halliburton also employed additional technologies and strategies to further mitigate the impact of completion operations. Latest technology was also employed to reduce overall sound using sound walls and temporary barriers, Wellhead Connection unit, Greaseless wireline, Auxiliary pump-down tractor and to mitigate the impact of Sand delivery and storage, Express Sands. Through these efforts SRC Energy accomplished not only a lower safety profile, but an operational environment that re-defines the way we can do business in this environment.



**Figure 2 Express Sand Units on SRC Energy Location**

Despite all of the substantial accomplishments achieved through this focused effort, SRC Energy with cooperation from Halliburton, are determined to continue find the newest, safest and environmentally friendly methods that can be achieved for an oilfield operator in the DJ Basin and industry.